

# PT60A

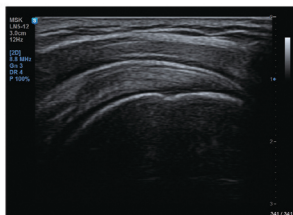
## Compactly Powerful

### Designed to satisfy point-of-care application

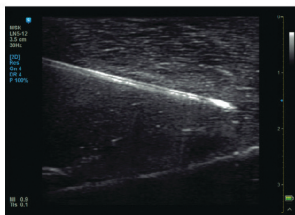
Compact-sized ultrasound system engineered to meet the needs of the portable market and incorporates advanced features.



Liver with ClearVision



Supraspinatus tendon



Needle guidance with NeedleMate™

### Product information

- Advanced imaging functions (ClearVision, MultiVision)
- Needle guidance technology (NeedleMate™)
- Semi-automated measurement of intima-media thickness (Auto IMT)
- Workflow improving tool (QuickScan™)
- 10.1-inch LED full touch screen / monitor
- Optional cart (height-adjustable / transducer ports / basket space / encased printer)